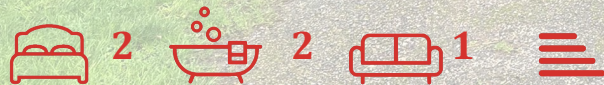




Swanage Bay View

Panorama Road Swanage, BH19 2QS



£75,000 Commonhold



Swanage Bay View

Panorama Road Swanage, BH19
2QS

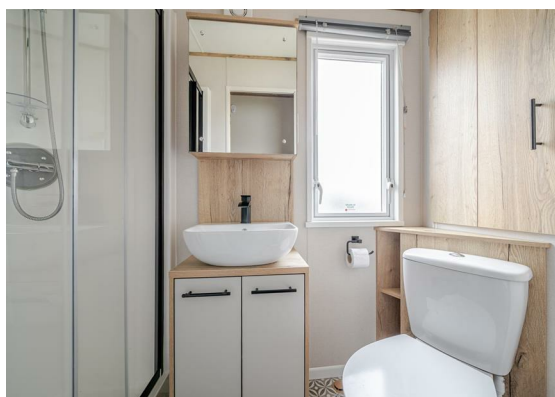




Nestled within the picturesque Swanage Bay View caravan park, this charming 2022 ABI Beverley caravan offers a delightful retreat with breathtaking views over the town and bay, extending to the Isle of Wight in the distance. Measuring 36.00 x 12.00, this property is designed for comfort and relaxation, making it an ideal getaway.



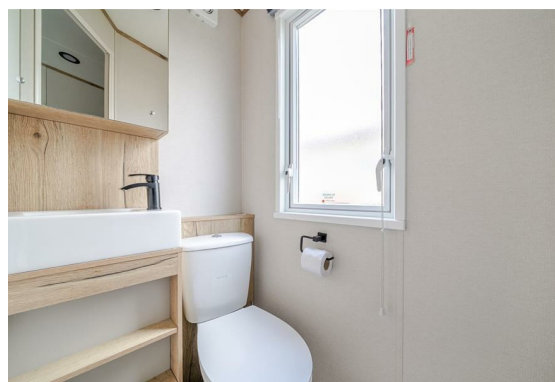
The caravan features two well-appointed double bedrooms. The main bedroom boasts an ensuite cloakroom and generous fitted wardrobes, providing ample storage space. The second bedroom is thoughtfully configured as a twin,



also equipped with fitted wardrobes, ensuring that guests or family members enjoy their own comfortable space.

The heart of the home is the open-plan kitchen, living, and dining area, which is flooded with natural light thanks to the French doors that frame the stunning panoramic views. The modern kitchen is fitted with a range of appliances, making it perfect for preparing meals and entertaining.

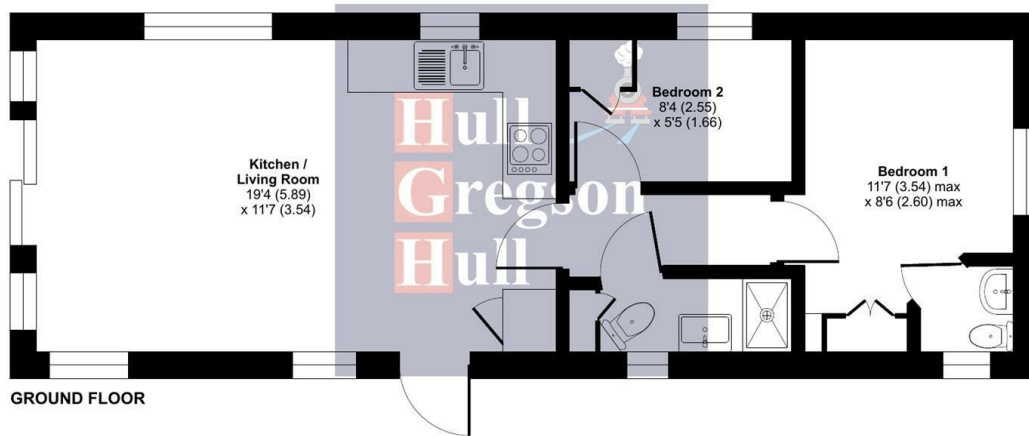
Outside, the property is complemented by a lovely decking area, ideal for summer barbecues or simply soaking in the serene surroundings. Additionally, parking is conveniently located right outside the caravan, adding to the ease of access.



Whether you are seeking a holiday home or a permanent residence, this property at Swanage Bay View offers a unique opportunity to enjoy coastal living in a beautiful setting. With its enchanting views and modern amenities, it is a must-see for anyone looking to embrace the charm of Swanage.

Panorama Road, Swanage, BH19

Approximate Area = 422 sq ft / 39.2 sq m
For identification only - Not to scale



Floor plan produced in accordance with RICS Property Measurement 2nd Edition, incorporating International Property Measurement Standards (IPMS2 Residential). © richcom 2025. Produced for Hull Gregson & Hull (Swanage) Ltd. REF: 1388337

Kitchen / Living / Dining Room

19'3" x 11'7" (5.89 x 3.54)

Bedroom One

11'7" x 8'6" (3.54 x 2.60)

Bedroom Two

8'4" x 5'5" (2.55 x 1.66)

Shower Room

Ensuite W.C

Additional Information.

The following details have been provided by the vendor, as required by Trading Standards. These details should be checked by your legal representative for accuracy. The caravan was release onto site in 2022 and came with a 20 year licence (from 2022). The site fees are approximately £8776.61 per annum.

Property type: Caravan

Property construction: Standard

Mains Electricity

Mains Water & Sewage: Supplied by Wessex Water

Heating Type: LPG Gas- arranged by the site.

Broadband/Mobile signal/coverage: For further details please see the Ofcom Mobile Signal & Broadband checker. checker.ofcom.org.uk/

Disclaimer.

These particulars, whilst believed to be accurate are set out as a general outline only for guidance and do not constitute any part of an offer or contract. Intending purchasers should not rely on them as statements of representation of fact but must satisfy themselves by inspection or otherwise as to their accuracy. All measurements are approximate. Any details including (but not limited to): lease details, service charges, ground rents, property construction, services, & covenant information are provided by the vendor, and you should consult with your legal advisor/ satisfy yourself before proceeding. No person in this firm's employment has the authority to make or give any representation or warranty in respect of the property.

